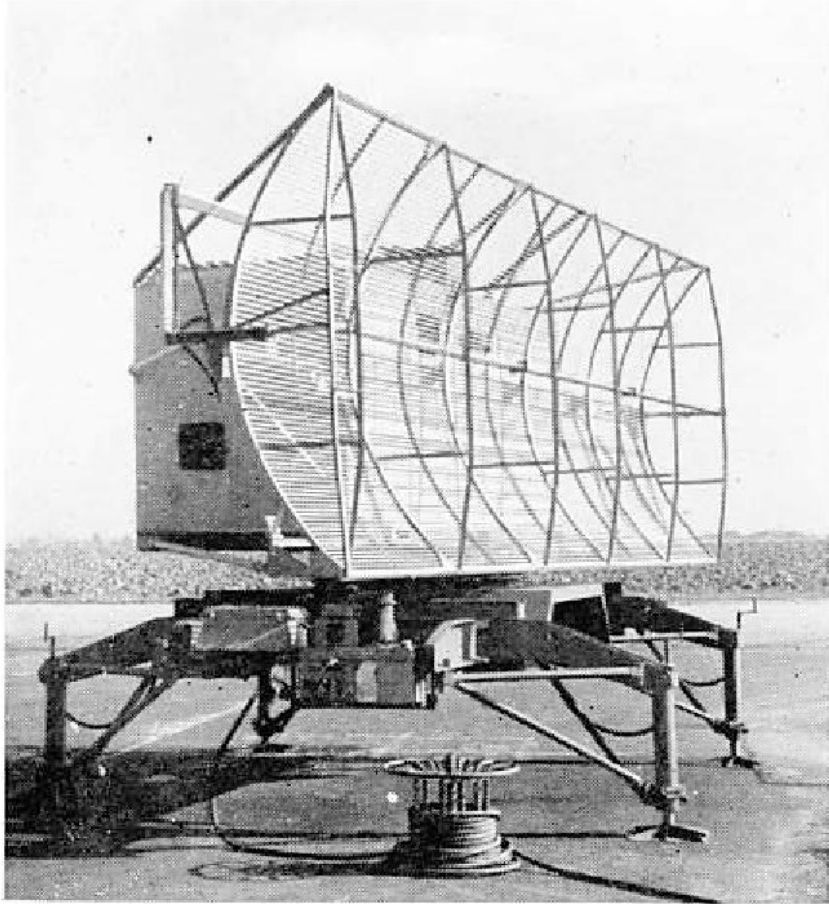
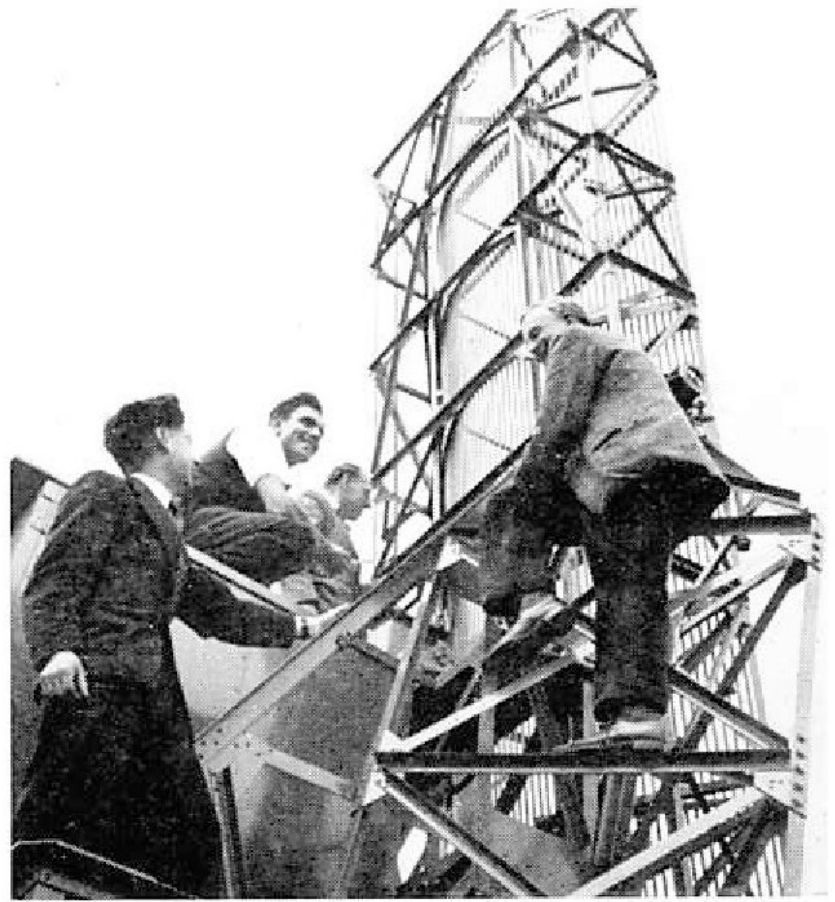


# Scanners at Rivenhall

*This equipment detects the approach of aircraft. The radar scanner cabin and aerial was built on Tyneside by our subsidiary company, Scanners Ltd., who were featured in the main article of the March issue of the magazine*



*M.W.T. engineers up on the scanner making final adjustments before testing a Type 13 installation just received from Scanners. Left to right, Reg Harmer, Phil Flowerday, Ron Swales and Don Bowman*



*“Sugar” Robinson, Cyril Withams, charge-hand, and Bill Hayden are some of the efficient packers who despatch equipment weighing over seven tons to the far corners of the earth. An enormous wooden crate is being built round this cabin*



*One of the three generator sets which are supplied with every Radar Type 2A equipment is being started up by Peter Miles and Ken Coates. In the foreground are Rivenhall Works and Technical Superintendents Jack Frost and Paddy Duff with Reg Harmer*

