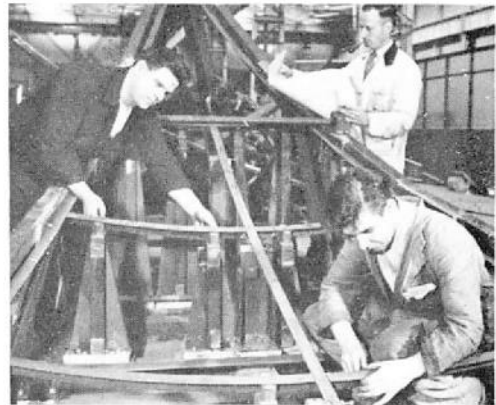




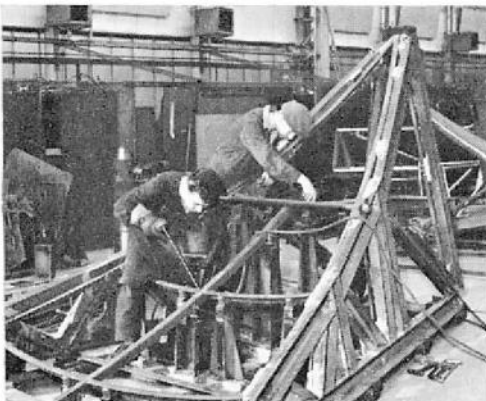
Turning out cheeses

WHEN THE DISH AERIAL, now being installed at Galleywood, is completed, experiments on a forward scatter link between here and Start Point, Devon, will begin. Scanners Ltd. have made and are erecting the dish and here are some pictures taken during its construction at Newcastle.

BELOW LEFT: One of the first jobs in the building of a dish aerial is the rolling of the angle iron to form the segments of the frame. The exact curves can be obtained by setting the rollers in the machine which is being operated by Dougie Henry



ABOVE RIGHT: The side frames have been fitted in the cheese jig and welded. Next the centre and cross bracings are fitted. This shows very clearly how they are placed and held exactly by the jig, itself a sturdy construction which has been very accurately built. Working here are D. Henry, R. Makepeace, and Inspector Harry Clifford. BELOW LEFT: When the fitters have placed the bracings, the welders 'tack' them and then go on to complete each joint. The electric welding here is being done by Brian Churchill, and Bill Bell is tightening the bracing bar. In the meanwhile the sheet men, the skimmers, have been preparing the plates for the aerial surface. The skin is cut from one-eighth mild steel plate, seven sections to each cheese segment. Each is rolled to an exact curve in two directions



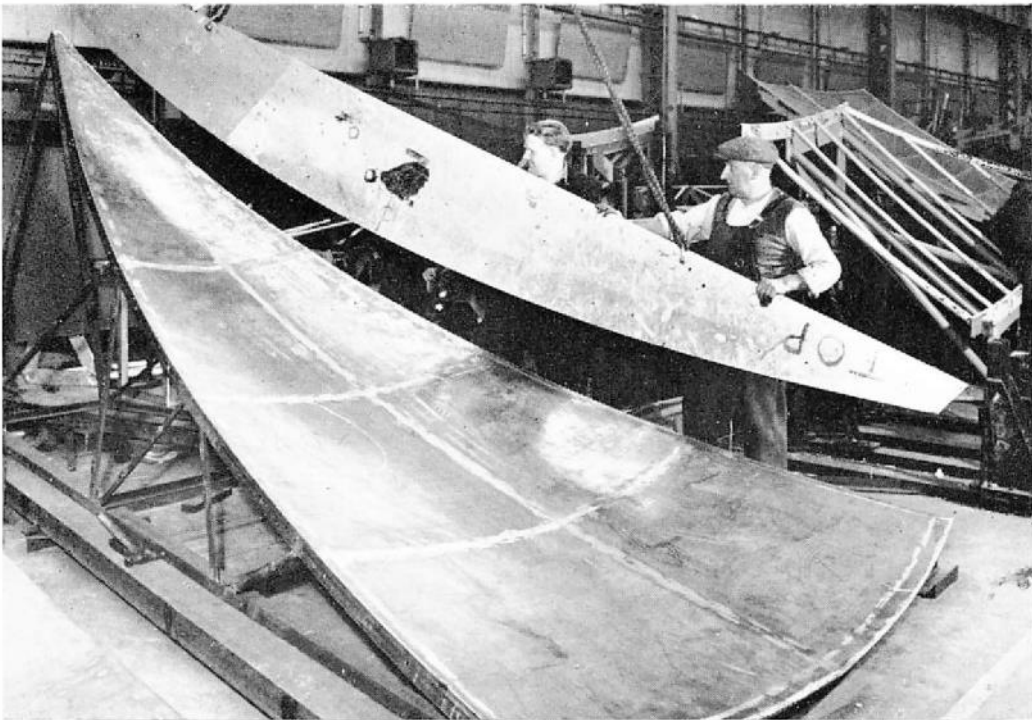
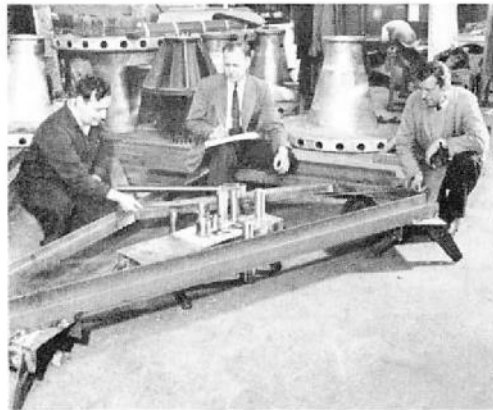
for the dish

BOTTOM RIGHT (opposite page): The 'skins' being fitted and tacked. The first skin, the triangular one at the apex, is secured and then the side jigs are lifted clear. The other skins follow and all are welded underneath

ABOVE RIGHT: The welding of the skins causes distortion which, though allowed for by over rolling, must finally be corrected by the panel beaters. They heat the metal with a torch, douse it with water and beat the panel into an exact curve. The contraction takes out the ripples.

BELOW: The profile of each cheese is checked with a template, and checked again until the panel beaters are satisfied with their job and the surface is right

RIGHT: Flat on the floor here is the strong-back which will hold the aerial to the gantry. Supervising its layout are A. C. Beadling, Production Engineer, centre, Bill Hedley, left, and Alan Phillips, Shop Supervisor, right. Installation starts—see back cover





Cheeses for the dish. This is the preliminary stage of installation by Scanners at Galleywood of the thirty-foot dish aerial made at Newcastle. When it is complete, experiments on a forward scatter link between here and Start Point will begin. See the aerial being made on page 18