



## Accessories for Transportable/Static Radar Systems

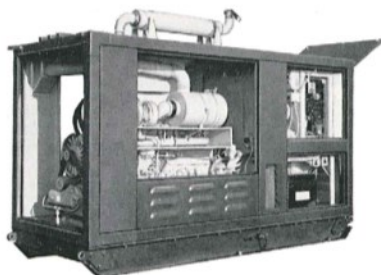
There is a comprehensive range of accessories, for S600 transportable systems, which includes insulated cabins, running gear, mounting pallets, air conditioning units, waveguide pressurization units and power supplies.

### Insulated Cabins

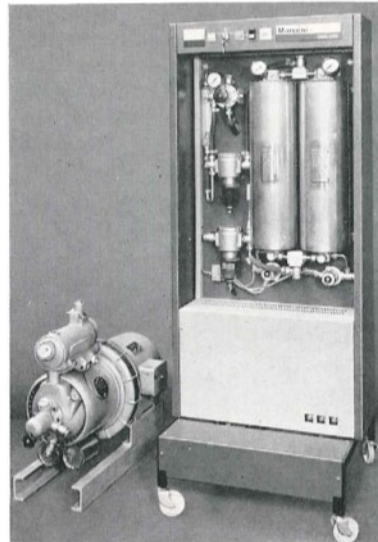
These cabins are used for housing transmitting, signal processing, display and data handling equipment as well as supporting services. The cabins, measuring 3.6 x 2.4 x 2.3m (12 x 8 x 7.5ft) approximately are constructed of aluminium alloy and include thermal and aural insulation. The cabins are equipped with lifting rings and 'tine boxes' which are used to attach running gear for overland transportation or drive-in loading into transport aircraft.

### Running Gear

The running gear comprises front and rear wheel assemblies with a built-in lifting facility, having an overall weight of 680kg (1500lb). The front set of wheels have a towbar linked to Ackerman steering designed for a 16m (52.5ft) turning circle. The suspension is achieved with pneumatic tyres and inflatable air cushions which can be adjusted to suit different loading conditions. A hydraulic jacking system is built-in on each assembly and is used to lift the payload to the towing height and it is locked for towing; it can also be used to raise or lower the payload to any intermediate position between 20cm (8 inches) above the roading level and 38cm (15 inches) above ground level to assist aircraft loading etc. The brakes are of the surge operated hydraulic type with a mechanical parking brake. The running gear is attached to the payload by tines which locate in tine-boxes fitted as standard on all aerial



Transportable power plant



Drier and compressor units

vehicles, cabins and pallets. The tines are locked in position with a single bolt on each tine.

### Mounting Pallets

Mounting pallets are available for the transportation of air conditioner units and other accessories. They comprise flat platforms fitted with lifting rings and tine boxes.

### Air Conditioning Units

Separate externally mounted air conditioning units are available to effect cooling for the equipment areas and for the comfort of personnel in the control areas. The air conditioning units which are secured to one end of the cabin structure are generously rated and fully protected from harmful climatic conditions.

### Waveguide Pressurization Units

An auxiliary waveguide pressurization unit employs two hydrovane air compressors each feeding a heatless desiccant drier. The compressors function in shared duty, one normally on standby to switch on at a failure or during maintenance. The compressors are mounted on skids secured to a tubular framework which is of assistance when lifting, and supports the protective climatic and

environmental cover. The drier is mounted on the exterior of the transportable transmitter cabins, and as proof against climatic and environmental conditions it is constructed of stainless steel plated with copper alloys. It is provided with a protective canopy which does not obstruct observation, ventilation or maintenance.

### Power Supply

The transportable power plant used in S600 systems is a Dorman 6DAT lightweight, air-cooled, turbo-charged 1500 r/min diesel engine, driving a McFarlane transicon brushless alternator giving an output of 40kVA. The complete generator weighing only 1452kg (3200lb) is suitable for operation in any part of the world between 0 to 8000ft at a maximum ambient temperature of 55°C.

The generator, fitted with a canopy and side panels, employs an automatic fuelling system, protection circuits and output control gear. For transportation the power plant is strapped to a standard S600 series pallet which will also carry all associated cables and connectors.

Full details are given in Marconi Radar Data Sheet G1.