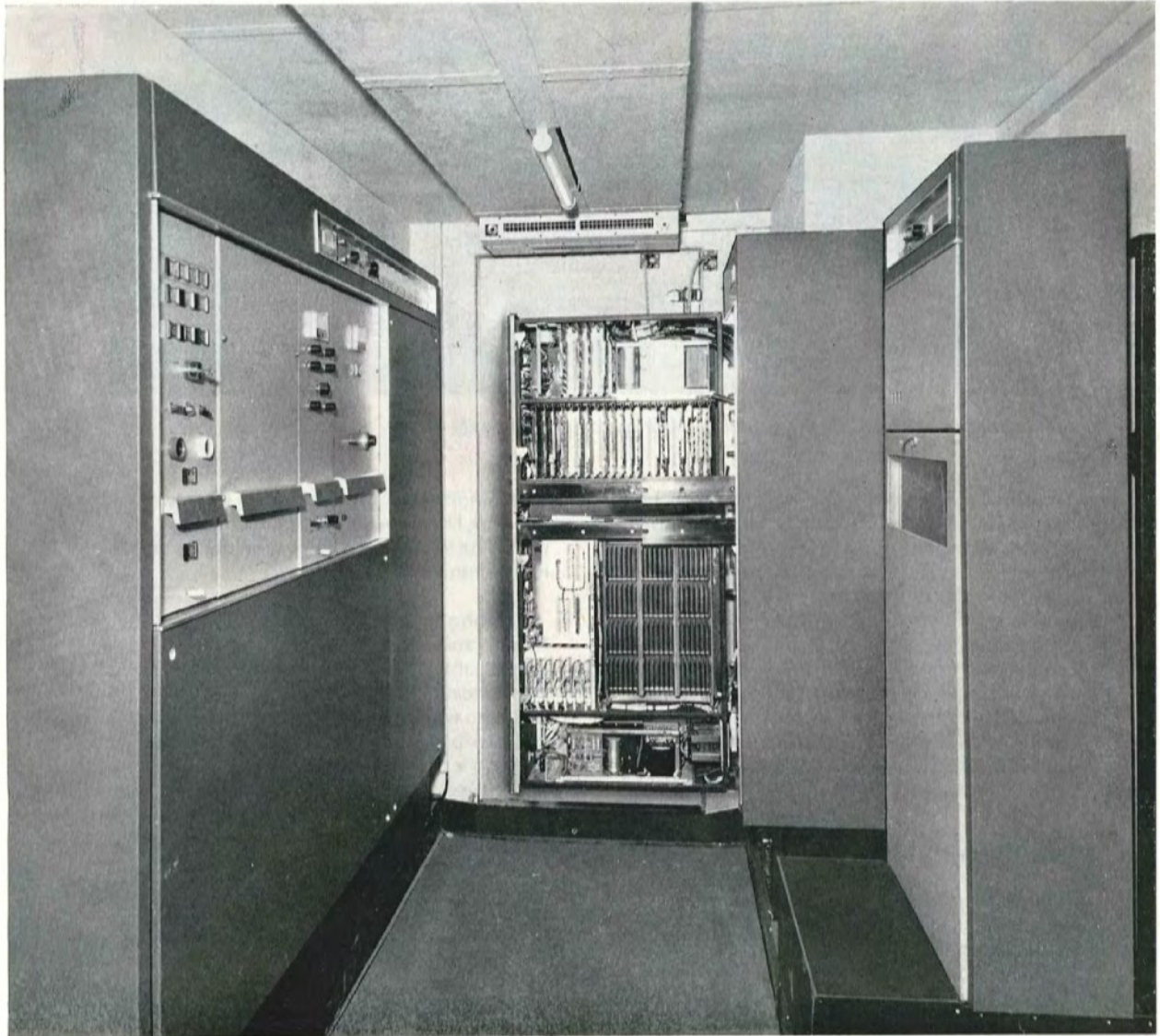


**Marconi Radar  
Data Sheet**

**E1**

**Electronics Cabins  
Type S5011, S5012 and  
S5016**



Transportable  
Rapidly deployed  
Extendable system capability

---

## Terminations

---

All cables required for connecting to external equipment are terminated on three sloping panels recessed into the external wall of the cabin below the escape hatch.

The waveguide outlet is positioned through an aperture in the cabin side wall and immediately below this, near to the floor, is a deep recess containing a location post. This post is the attachment point for the aerial gantry.

---

## External Finish

---

The cabin is undersealed and finished in drab-matt paint which conforms to protective requirements specified by the United Kingdom Defence Ministry.

---

## Internal Finish

---

The interior walls and ceiling are finished in Silixine paint and the floor covered with a vinyl material. Both are hardwearing and present a good appearance.

---

## General

---

The running gear, pallets, air conditioning, power and waveguide pressurization units are described in Marconi Radar Data Sheet E5. The optional

extras that can be fitted are described in Marconi Radar Data Sheet E6.

The basic electronic equipments for each of these cabins are listed below, and details of each item are given in the Marconi Radar Data Sheet quoted in parentheses.

### **Electronics Cabin Type S5011**

10cm S-band 1 MW Transmitter/Receiver Type S2010 (*Data Sheet B1*) or

10cm S-band 2·25MW Transmitter/Receiver Type S2012 (*Data Sheet B3*).

Signal processing equipment (*C series Data Sheets*).

Aerial Alternating Current Controller Type S6011 or Aerial Azimuth Servo Controller Type S6012 (*Data Sheet E3*).

16in Fixed-Coil Radar Display Type S3009 (*Data Sheet F4*).

### **Electronics Cabin Type S5012**

5·5cm C-band 1 MW Transmitter/Receiver Type S2013 (*Data Sheet B4*).

Heightfinder Servo Controller and Height Extractor Type S6013 (*Data Sheet E4*).

### **Electronics Cabin Type S5016**

23cm L-band 2 MW Transmitter/Receiver Type S2011 (*Data Sheet B2*).

Signal processing equipment (*C Series Data Sheets*).

Aerial Alternating Current Controller Type S6011 or Aerial Azimuth Servo Controller Type S6012 (*Data Sheet E3*).

16in Fixed-Coil Radar Data Display Type S3009 (*Data Sheet F4*).

The information given herein is subject to confirmation at the time of ordering.

## **Marconi Radar Systems Limited**

A GEC-Marconi Electronics Company

Crompton Works, Chelmsford, England CM1 3BN

Telephone: Chelmsford (0245) 67111. Telegrams: Marstor Chelmsford Telex.

Telex: 99108 and 99449.

**E1**

ISSUE 3